

# HIGH QUALITY POWER SOLUTIONS

- For Cameras and Lighting
- Longstanding experience in the Film and Television Industry
- Serial Production and Customized Solutions

ASSOZIIERTES MITGLIED DER INITIATIVE





# UNIQUE FEATURES

---



## Virtually unbreakable

The bebob batteries are designed to survive a fall of 1.5m. Nevertheless, if one should crack, the modular concept allows any mechanical part to be replaced.



## Refit

bebob batteries aren't disposables but durable equipment. When the capacity has become insufficient after years of use, batteries can be easily re-celled in our factory – for about half the price of a new one.



## Twist D-Tap

Only bebob batteries provide the unique bebob Twist-D-Tap. This rainproof socket allows you to plug a D-Tap connector into the battery with free choice of cable trailing from the left or right.



## USB Port

bebob batteries offer you an USB Port (5V 1A) to connect any USB powered device. So you can charge your smartphone or tablet directly on location!



## Fully certified

All bebob products are certified following the legal regulations – like CE, UN, GVV, UL, FCC/EMV.



## Status Alarm

In addition to the fuel gauge, bebob CINE batteries are fitted with a status alarm. When the battery becomes older and its total capacity goes beyond 80%, the LED alarm lights yellow. When the total capacity goes beyond 60%, the LED alarm lights red. This way, you always know about the capacity of your batteries and can decide upon their refitting.



## High-Current Capability (RM-CINE batteries only)

Thanks to the unique V-Mount CINE connection and the CINE-VMM HL camera plate, the battery can continuously deliver 20A without risking any damage – neither to the connector pins, nor to the cells (Trimix HL cells).



# ON-BOARD BATTERIES

All batteries and chargers are available both as V-Mount (compatible with Sony, IDX, etc.) and Gold Mount (compatible with Anton Bauer, etc.). The different mounts are indicated in the product names: »V« stands for V-Mount, »A« for Gold Mount.



### Technical specifications:

- Electronic control of over-voltage, under-voltage, over-current, over-charge, over-discharge and over-temperature
- Data exchange with the camera
- 1 year warranty / 70% capacity

Type	V98	A98
Capacity	6.8Ah / 98Wh	6.8Ah / 98Wh
Voltage	14.4V	14.4V
Max. Discharge Current	8.0A	8.0A
Weight	0.63kg	0.63kg
Dimensions (W x H x D)	94 x 144 x 39mm	94 x 144 x 49mm
Charging Time (bebob VS2/ VS4)	2 hours	2 hours
Warranty	1 year / 70% capacity	1 year / 70% capacity

Type	V150	A150
Capacity	10.2Ah / 147Wh	10.2Ah / 147Wh
Voltage	14.4V	14.4V
Max. Discharge Current	10.0A	10.0A
Weight	0.82kg	0.82kg
Dimensions (W x H x D)	94 x 144 x 58mm	94 x 144 x 68mm
Charging Time (bebob VS2/ VS4)	3 hours	3 hours
Warranty	1 year / 70% capacity	1 year / 70% capacity

Type	V200	A200
Capacity	13.6Ah / 196Wh	13.6Ah / 196Wh
Voltage	14.4V	14.4V
Max. Discharge Current	10.0A	10.0A
Weight	1.0kg	1.0kg
Dimensions (W x H x D)	94 x 144 x 58mm	94 x 144 x 68mm
Charging Time (bebob VS2/ VS4)	4 hours	4 hours
Warranty	1 year / 70% capacity	1 year / 70% capacity

# HIGH-LOAD BATTERIES



### Technical specifications:

- Electronic control (as above)
- Continuous load of 20A
- Built-in status alarm
- Data exchange with the camera
- 2-years warranty / 80% capacity

Type	V90RM-CINE	A90RM-CINE
Capacity	6.0Ah / 89Wh	6.0Ah / 89Wh
Voltage	14.4V	14.4V
Max. Discharge Current	20.0A (over CINE V-Mount)	20.0A (over CINE GM-Mount)
Weight	0.82kg	0.82kg
Dimensions (W x H x D)	94 x 144 x 58mm	94 x 144 x 68mm
Charging Time (bebob VS2/ VS4)	3 hours	3 hours
Warranty	2 years / 80% capacity	2 years / 80% capacity

Type	V155RM-CINE	A155RM-CINE
Capacity	10.8h / 155Wh	10.8h / 155Wh
Voltage	14.4V	14.4V
Max. Discharge Current	20.0A (over CINE V-Mount)	20.0A (over CINE GM-Mount)
Weight	1.0kg	1.0kg
Dimensions (W x H x D)	94 x 144 x 58mm	94 x 144 x 68mm
Charging Time (bebob VS2/ VS4)	3 hours	3 hours
Warranty	2 years / 80% capacity	2 years / 80% capacity

Type	V290RM-CINE	A290RM-CINE
Capacity	20.4h / 155Wh	20.4h / 155Wh
Voltage	14.4V	14.4V
Max. Discharge Current	20.0A (over CINE V-Mount)	20.0A (over CINE GM-Mount)
Weight	1.39kg	1.39kg
Dimensions (W x H x D)	94 x 144 x 77mm	94 x 144 x 87mm
Charging Time (bebob VS2/ VS4)	3 hours	3 hours
Warranty	2 years / 80% capacity	2 years / 80% capacity

# CHARGERS

All chargers come with built-in AC adapters, delivering 5A 15.0V over the XLR-4 socket. Another convenient feature is the powerbase function: When batteries are placed on the charger and the charger isn't plugged in AC, the energy of the battery will be delivered over the XLR-4 output.

Technical specifications:

- 2 or 4 channel simultaneous charger
- Built-in AC adapter
- Powerbase function
- 2 years warranty



Type	VS2-RL	AS2-RL
Mount	V-Mount	Gold Mount
Channel	2 simultaneous	2 simultaneous
Charging Current	16.8V / 2.5A	16.8V / 2.5A
DC Output	15.0V / 5.0A	15.0V / 5.0A
Weight	1.0kg	1.0kg
Dimensions (W x H x D)	110 x 231 x 141mm	100 x 231 x 141mm
Batteries	bebob / ldx / Sony	bebob / anton bauer®
Warranty	2 years	2 years

Type	VS4-RL	AS4-RL
Mount	V-Mount	Gold Mount
Channel	4 simultaneous	4 simultaneous
Charging Current	16.8V / 2.5A	16.8V / 2.5A
DC Output	15.0V / 5.0A	15.0V / 5.0A
Weight	1.9kg	1.9kg
Dimensions (W x H x D)	145 x 225 x 270mm	150 x 225 x 270mm
Batteries	bebob / ldx / Sony	bebob / anton bauer®
Warranty	2 years	2 years

Type	VS2	AS2
Mount	V-Mount	Gold Mount
Channel	2 simultaneous	2 simultaneous
Charging Current	16.8V / 2.5A	16.8V / 2.5A
DC Output	15.0V / 5.0A	15.0V / 5.0A
Weight	1.0kg	1.0kg
Dimensions (W x H x D)	110 x 231 x 141mm	100 x 231 x 141mm
Batteries	bebob / ldx / Sony	bebob / anton bauer®
Warranty	2 years	2 years

Type	VS4	AS4
Mount	V-Mount	Gold Mount
Channel	4 simultaneous	4 simultaneous
Charging Current	16.8V / 2.5A	16.8V / 2.5A
DC Output	15.0V / 5.0A	15.0V / 5.0A
Weight	1.9kg	1.9kg
Dimensions (W x H x D)	145 x 225 x 270mm	150 x 225 x 270mm
Batteries	bebob / ldx / Sony	bebob / anton bauer®
Warranty	2 years	2 years





# ON-GROUND BATTERY

This block battery is one of the strongest in the industry – and the world’s first Multivoltage Li-Ion Battery with a capacity of more than 1kWh and integrated charger. Thanks to its 48V output, it even delivers enough power to run the ARRI SkyPanel® S60 at full performance.

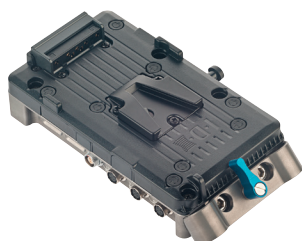


## Technical specifications:

- Built-in charger
- For cameras and lighting
- 48V for ARRI SkyPanel S30 and S60
- 2 years warranty / 80% capacity

Type	CUBE1200
Voltage	5.0V / 12.0V (unreg.) / 24.0V / 48.0V
Capacity	81.6Ah / 1176Wh
Maximum Load	480W
Outputs	2 USB 5.0V (2A) 1 Twist D-Tap 12.0V (unreg.) 10.0A 2 XLR-4 12.0V (unreg.) 10.0A 2 XLR-3 24.0V 10.0A XLR-10 48.0V 10.0A
Charging Time	8 hours
AC In	90-264V / 47-63Hz
Technology	Lithium-Ion Trimix HL
Weight	8.95kg
Dimensions	208 x 356 x 167mm
Warranty	2 years / 80% capacity

# BATTERY ADAPTERS



## Technical specifications:

- V-Mount & Gold Mount Battery Adapter for 15mm rods
- Powers up to 8 additional accessories (e.g. onboard light, monitor, external recorder, wireless audio, etc.)

Type	COCO-15V III	COCO-15A III
Voltages	5.0V / 7.6V / 8.4V / 12.0V (unreg.)	5.0V / 7.6V / 8.4V / 12.0V (unreg.)
Max. Discharge Current	depends on battery	depends on battery
Weight	0.41kg	0.41kg
Dimensions (WxHxD)	90 x 160 x 42mm	90 x 160 x 42mm
Connections	3 Hirose HR4, 2 USB, 2 Twist D-Tap, 1 Lemo	3 Hirose HR4, 2 USB, 2 Twist D-Tap, 1 Lemo
Warranty	2 years / 80% capacity	2 years / 80% capacity

# HOT SWAP ADAPTERS

When the battery runs empty, our ML-120 Hot Swap Adapters take over the powering of the camera for 2 minutes, while simultaneously providing a visible alarm. So they allow to swap the battery without interrupting the powering of the camera. After usage, the ML-120 gets recharged from the camera battery.



## Technical specifications:

- Available for all kinds of V-Mount and Gold Mount cameras
- Power the camera without interruption for 120s
- Feature a 12V DC D-Tap port, secured by a 5A self-resetting fuse

Type	ML-120	ML-120 HL
Running Time	2 minutes	2 minutes
Voltage	14.4V	14.4V
Max. Load	15A	20A
Weight	0.52kg	0.52kg
Dimensions (WxHxD)	140 x 76 x 45mm	140 x 76 x 45mm
Charging Mode	automatic	automatic
Warranty	2 years / 80% capacity	2 years / 80% capacity

# CUSTOMIZED SOLUTIONS

Looking for something very specific? Besides the serial production as shown in this catalogue, our engineers are able to develop individual customized solutions for specific customer needs.  
Just give us a call!



Some recent examples of our work:

**Norddeutscher Rundfunk:** Integration of wireless interfaces into a portable audio system, less than 100 units, implementation within 6 months

**ARRI Kamera:** V-Mount battery plate for Alexa Mini, more than 1.000 units, implementation within 6 weeks

**ARRI Licht:** Battery mount for SkyPanel®, less than 10.000 units, implementation within 10 weeks

# ABOUT BEBOB

Since more than 20 years bebob stands for premium camera accessories, technical innovations and proven quality »made in Germany«. Founded in 1995, our battery manufactory is today one of the most renowned producers in the film technology industry. Tens of thousands of bebob batteries and chargers are currently in use at film and TV studios all over the world.

The production process for all bebob products always meets the highest quality standards – be it in our own factory or at selected suppliers in the Munich area. Besides V-Mount and Gold Mount Batteries, Chargers, Adapters and Hot Swap Adapters, our product portfolio also includes Remote Controls.

Today, the most renowned TV broadcasters and film technology rental companies worldwide are trusting in our camera accessories – like for example AL JAZIRA, ARRI, BBC, BR, Cinagate, Cine-Mobil, Eyelight Belgium, FRANCE 3, Ludwig Kameraverleih, NDR, OVIDE Spain, Panalux London, RAI, TSF Paris, TVE, WDR and ZDF (just to name a few).

# CONTACT

Bebob factory GmbH, Höglwörther Str. 350, D-81379 München

Tel: +49 89 27 81 82 82, Fax: +49 89 27 81 82 81

E-Mail: [info@bebob.de](mailto:info@bebob.de), Web: [www.bebob.de](http://www.bebob.de)

